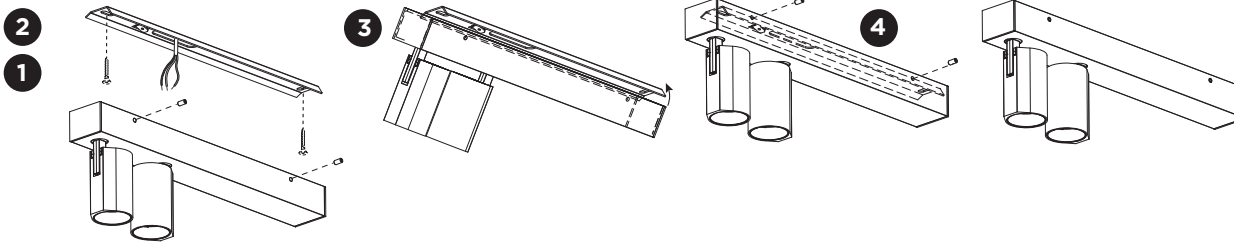


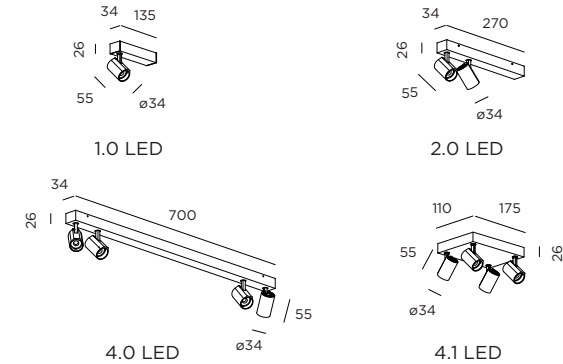
CENO SURFACE

INSTALLATION INSTRUCTIONS | JULY 2023

Installation for 1.0 / 2.0 / 4.0 / 4.1



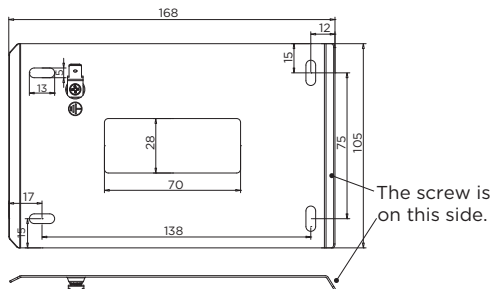
DIMENSIONS



Mounting base:

4.1

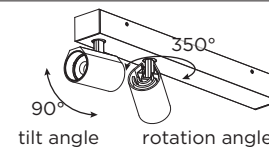
front view



side view

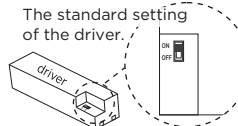


Only to be installed outside arms reach.



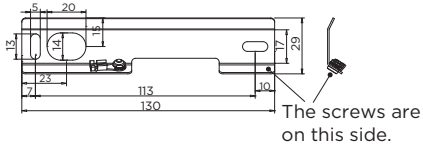
tilt angle rotation angle

For the driver(s) of 2.0 or 4.0:
Do not change the standard settings of the driver!



1.0

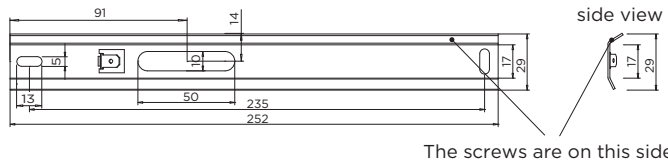
front view



side view

2.0

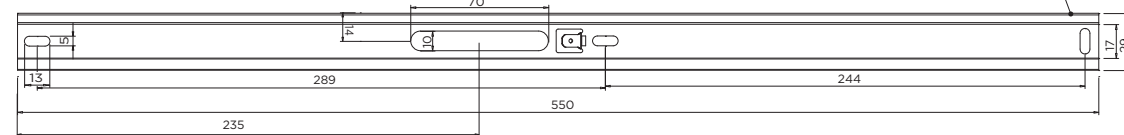
front view



side view

4.0

front view



MOUNTING INSTRUCTION

- Remove the mounting base from the luminaire by loosening the socket screws and mount it on the ceiling with screws (screws are not included).
- POWER CONNECTION
Connect to 220-240V.
 - 1.0: L, N, PE
 - 2.0: L, N, PE
 - 4.0: L, N, PE
 - 4.1: L, N, PE

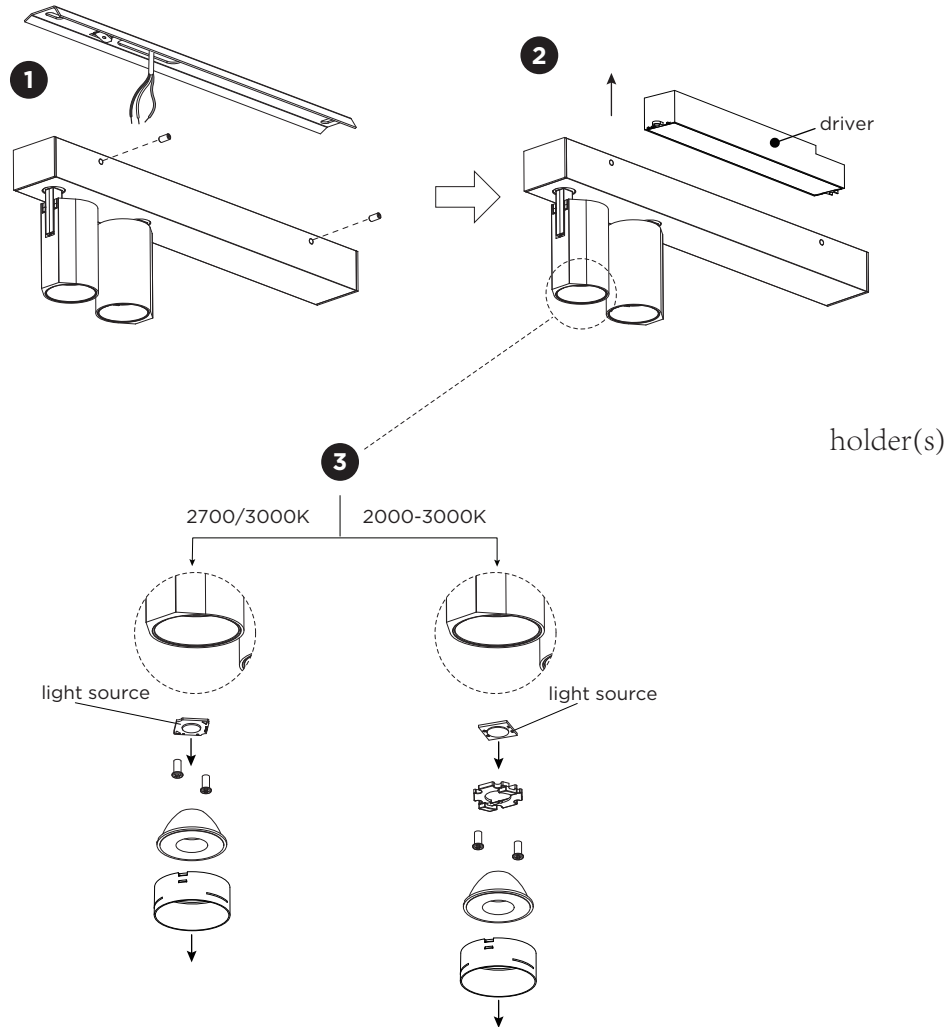
Connect the ceiling base earth cable.

 - 1.0: PE
 - 2.0: PE
 - 4.0 / 4.1: PE
- Attach the luminaire to the mounting base with the screw opposite side first and tilt towards the ceiling as shown.
- Fix the luminaire on the base with the socket screws.

CENO SURFACE

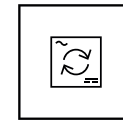
INSTALLATION INSTRUCTIONS | JULY 2023

Dismounting for 1.0 / 2.0 / 4.0 / 4.1



DISMOUNTING AND RECYCLING INSTRUCTIONS Light source & driver

- 1 Loosen the socket screws from the fixture to remove it from the mounting base.
- 2 Disconnect the wires to remove the driver.
- 3 Dismount the lens holder(s) and all parts behind to remove the light source(s).



The driver can be replaced by the end user.



The light source is replaceable by an authorized professional.
For advice contact your Wever & Ducré customer service contact point.

Every luminaire contains a light source with the corresponding energy class:

colour temperature	Energy class
2700K/3000K	A ↑ G E
2000-3000K	A ↑ G G