

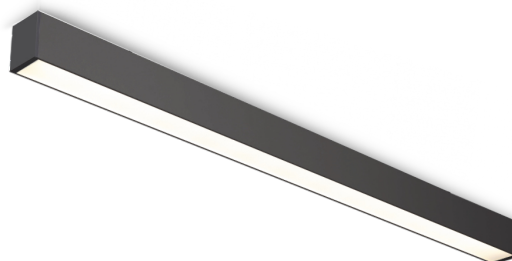
# Technical Data Sheet

## Basic - surface



### Product description

Basic linear led luminaire for offices, meeting rooms, corridors and households.





### Technical description

<b>Mains voltage</b>	220 - 240 V AC, 50 - 60Hz
<b>Connection</b>	3-pole
<b>Protection rating</b>	IP 20
<b>Light source</b>	LED
<b>Optical system</b>	Prismatic diffusor
<b>Wiring</b>	Fix / DALI
<b>Diffuser material</b>	Polycarbonate
<b>Housing material</b>	Aluminum
<b>Ambient temperature</b>	0 °C to +30 °C
<b>Service lifetime (L80, B30)</b>	50 000h
<b>Warranty</b>	3 years

Version	CCT	Power consup.	Output	CRI (Ra)	lm / W
<b>1200mm</b>	4000 k	32.0 W	4000 lm	80+	125
<b>1500mm</b>	4000 k	40.0 W	5000 lm	80+	125

### Dimensions

<b>1200</b>		l 1200 mm w 50 mm h 70 mm
-------------	---	---------------------------------

<b>1500</b>		l 1500 mm w 50 mm h 70 mm
-------------	---	---------------------------------

### Optics



■ 0°-180° ■ 90°-270°

## Product code

The technical specifications of the luminaire are determined through the combination of 4 categories, which result in a unique product code.

	Value	Code
<b>Model</b>	Basic surface	BASICSUR
<b>Version</b>	1200	1200
	1500	1500
<b>Dimming</b>	non-dimmable	1
	DALI	2
<b>Color</b>	Black	BL
	White	WH

## Configuration example

### Basic

Luminaire with a power consumption of 32 W that produce a luminous flux of 4000 lm. DALI, 1200 version, white color

Code: **BASICSUR 1200 2 WH**

---